

Performance of TRC 2008-3 (IET 22111) in All India Coordinated Rice Improvement Project (AICRP)

TRC 2008-3 (IET 22111), medium duration rice variety developed at Tripura centre was tested through All India Coordinated Rice Improvement Project (AICRP) under Initial Variety Trial 1-irrigated Medium (IVT -IM), Kharif 2011. TRC 2008-3 (IET 22111) yielded 5173 kg/ha on national average. In Region 2 (R2) the entry yielded 4597 kg/ha, in Region 3(R3) it yielded 5243 kg/ha, in Region 4(R4) it yielded 4879 kg/ha and in Region 5 (R5) it yielded 5428 kg/ha. In national average TRC 2008-3 came to 50% flowering in 109 days. Plant height was 105 cm and produced 292 panicles per sq.m.

The yield and yield related trait of TRC 2008-3 are presented in table as below

S. No.	Characters		TRC 2008-3 (IET 22111)	NC (NDR 359)	RC (NDR 8002)	LC
1.	Grain yield Kg/ha Regional Means	R2	4597	5221	3585	4570
		R3	5243	5127	5662	4667
		R4	4879	4634	4528	4525
		R5	5428	5541	6024	5602
		Mean	5173	5207	5380	4929
2.	Days to 50% Flowering Regional Means	R2	119	110	128	110
		R3	113	107	116	109
		R4	110	101	102	106
		R5	101	91	94	96
		Mean	109	100	107	104
3.	Panicles/sqm Regional Means	R2	315	335	317	310
		R3	289	243	297	276
		R4	230	237	233	243
		R5	310	316	288	356
		Mean	292	279	287	305
4.	Plant Height (cm) Regional Means	R2	111	113	97	102
		R3	102	105	104	98
		R4	111	113	127	98
		R5	104	111	116	104
		Mean	105	109	111	101

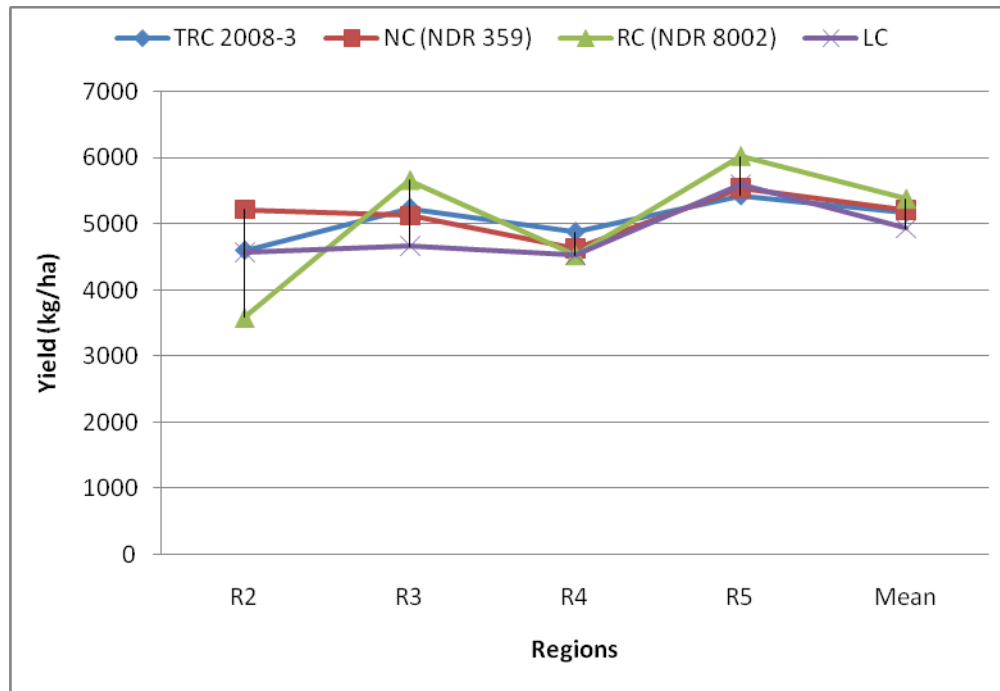


Figure 1: Yield Performance of TRC 2008-3 over regions

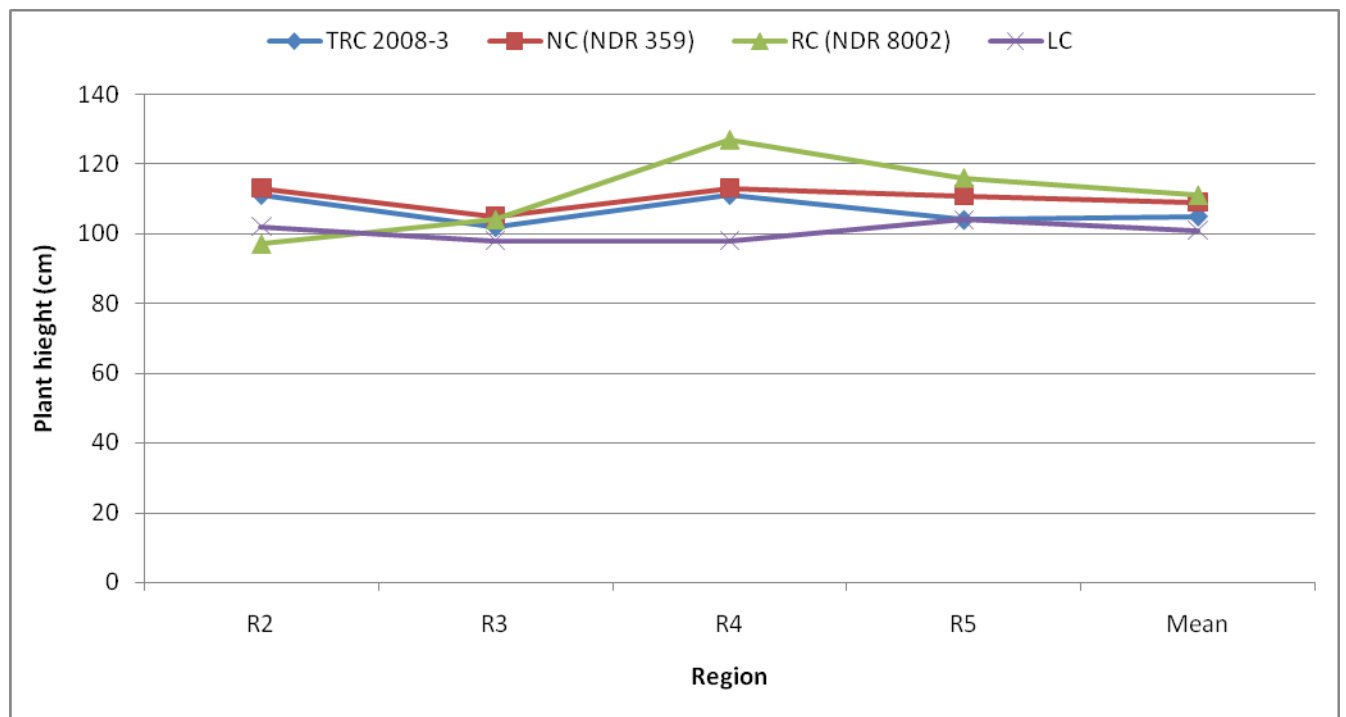


Figure 2: Performance of TRC 2008-3 over regions for plant height

Performance of TRC 2008-4 (IET 22112): in All India Coordinated Rice Improvement Project (AICRP)

TRC 2008-4 (IET 22112) , medium duration rice variety was tested through All India Coordinated Rice Improvement Project (AICRP) under Initial Variety Trial 1-irrigated Medium (IVT -IM), Kharif 2011. TRC 2008-4 (IET 22112) stood 1st in national average yield among the entries tested in the trial. The entry produced 5519 kg/ha in national average. In R2 it yielded 4249 kg/ha, in R3 5653 kg/ha, in R4 4558 kg/ha and in R5 the entry yielded 5922 kg/ha. Based on all national test sites it took 113 days to come to 50% flowering. Plant height was 105 cm and produced 294 panicles per sq.m.

The yield and yield related trait of TRC 2008-4 are presented in table as below

S. No.	Characters		TRC 2008-4 (22112)	NC (NDR 359)	RC (NDR 8002)	LC
1.	Grain yield Kg/ha Regional Means	R2	4249	5221	3585	4570
		R3	5653	5127	5662	4667
		R4	4558	4634	4528	4525
		R5	5922	5541	6024	5602
		Mean	5519	5207	5380	4929
2.	Days to 50% Flowering Regional Means	R2	128	110	128	110
		R3	119	107	116	109
		R4	113	101	102	106
		R5	104	91	94	96
		Mean	113	100	107	104
3.	Panicles/sqm Regional Means	R2	312	335	317	310
		R3	277	243	297	276
		R4	228	237	233	243
		R5	329	316	288	356
		Mean	294	279	287	305
4.	Plant Height (cm) Regional Means	R2	88	113	97	102
		R3	101	105	104	98
		R4	110	113	127	98
		R5	112	111	116	104
		Mean	105	109	111	101

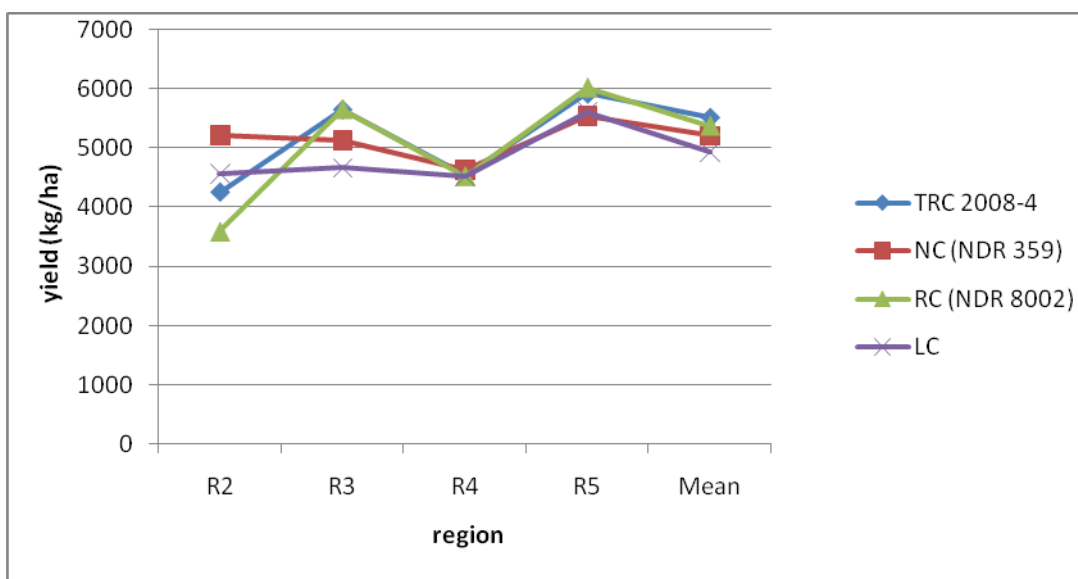


Figure 1: Yield Performance of TRC 2008-4 over regions

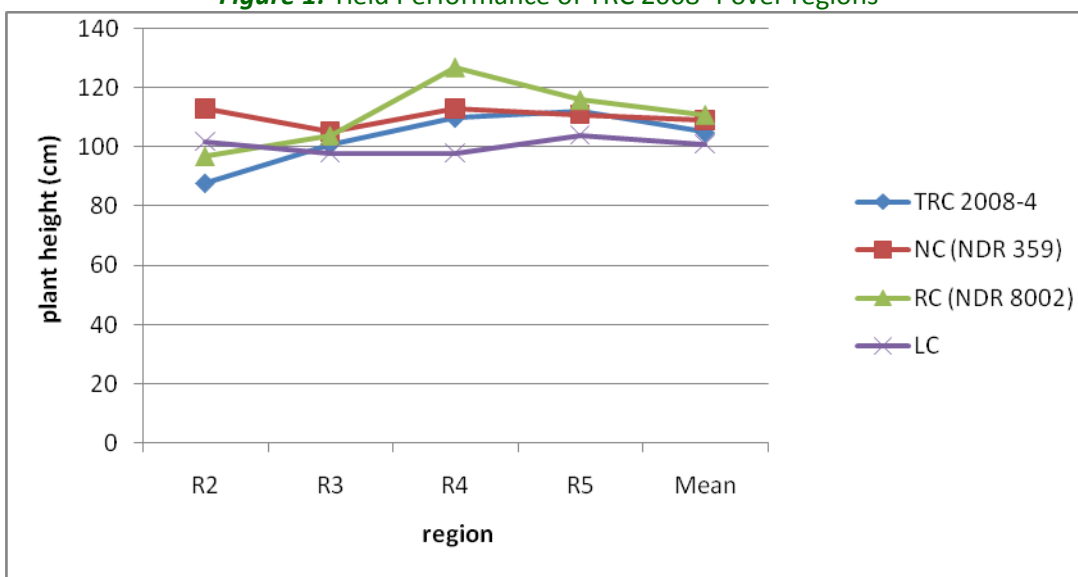


Figure 2: Performance of TRC 2008-4 over regions for plant height

Performance of TRC 2008-11 (IET 22531): in All India Coordinated Rice Improvement Project (AICRP)

TRC 2008-11 (IET 22531) was tested through All India Coordinated Rice Improvement Project (AICRP) under Initial Variety Trial 1-irrigated Medium (IVT -IM), Kharif 2011.

TRC 2008-11 (IET 22531) yielded 5413 kg/ha in national average and required 101 days for 50% flowering. The entry produced 298 panicles / sq.m. and its plant height was 104 cm.

The yield and yield related trait of TRC 2008-11 are presented in table as below

S. No.	Characters	TRC 2008-11 (22531)	NC (NDR 359)	RC (NDR 8002)	LC
	R2	5580	5221	3585	4570

2.	Grain yield Kg/ha Regional Means	R3	5196	5127	5662	4667
		R4	4483	4634	4528	4525
		R5	6066	5541	6024	5602
		Mean	5413	5207	5380	4929
3.	Days to 50% Flowering Regional Means	R2	108	110	128	110
		R3	104	107	116	109
		R4	103	101	102	106
		R5	96	91	94	96
		Mean	101	100	107	104
4.	Panicles/sqm Regional Means	R2	321	335	317	310
		R3	276	243	297	276
		R4	265	237	233	243
		R5	327	316	288	356
		Mean	298	279	287	305
5.	Plant Height (cm) Regional Means	R2	111	113	97	102
		R3	100	105	104	98
		R4	108	113	127	98
		R5	106	111	116	104
		Mean	104	109	111	101

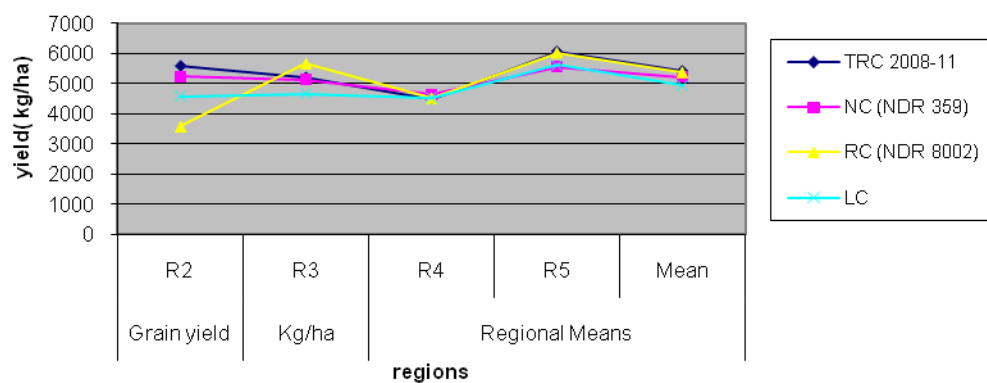


Figure 1: Yield Performance of TRC 2008-11 over regions

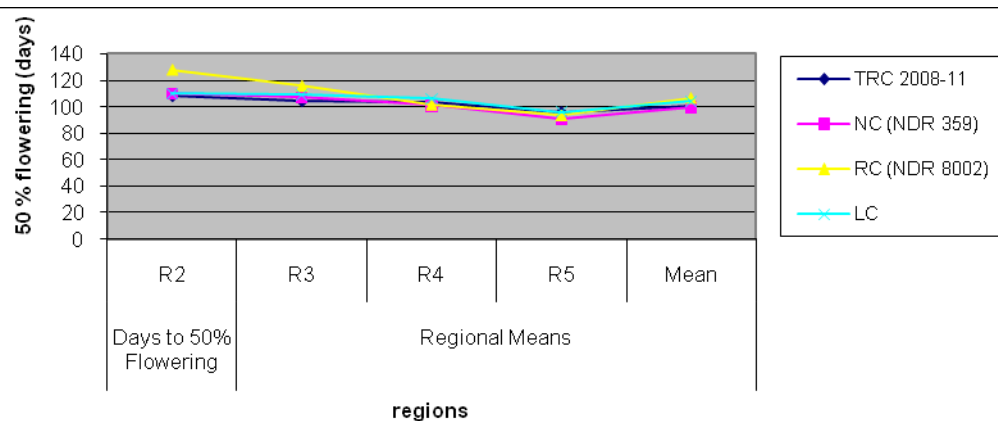


Figure 2: Performance of TRC 2008-11 over regions for days to 50 % flowering

Performance of TRC 2008-12 (IET 22532) in All India Coordinated Rice Improvement Project (AICRP)

TRC 2008-12 (IET 22532) was tested through All India Coordinated Rice Improvement Project (AICRP) under Initial Variety Trial 1-irrigated Medium (IVT -IM), Kharif 2011. TRC 2008-12 (IET 22532) yielded 5155 kg/ha at national average and required 108 days for 50% flowering. The entry produced 306 panicles per sq. m. and plant height was 106cm. The line yielded highest in R3 (5751 kg/ha), followed by R5 (5181 kg/ha).

The yield and yield related trait of TRC 2008-3 are presented in table as below

S. No.	Characters		TRC 2008-12 (22532)	NC (NDR 359)	RC (NDR 8002)	LC
1.	Grain yield Kg/ha Regional Means	R2	4487	5221	3585	4570
		R3	5751	5127	5662	4667
		R4	4091	4634	4528	4525
		R5	5181	5541	6024	5602
		Mean	5155	5207	5380	4929
2.	Days to 50% Flowering Regional Means	R2	120	110	128	110
		R3	111	107	116	109
		R4	113	101	102	106
		R5	98	91	94	96
		Mean	108	100	107	104
3.	Panicles/sqm Regional Means	R2	314	335	317	310
		R3	290	243	297	276
		R4	247	237	233	243
		R5	340	316	288	356
		Mean	306	279	287	305
4.	Plant Height (cm) Regional Means	R2	112	113	97	102
		R3	102	105	104	98
		R4	112	113	127	98
		R5	105	111	116	104
		Mean	106	109	111	101

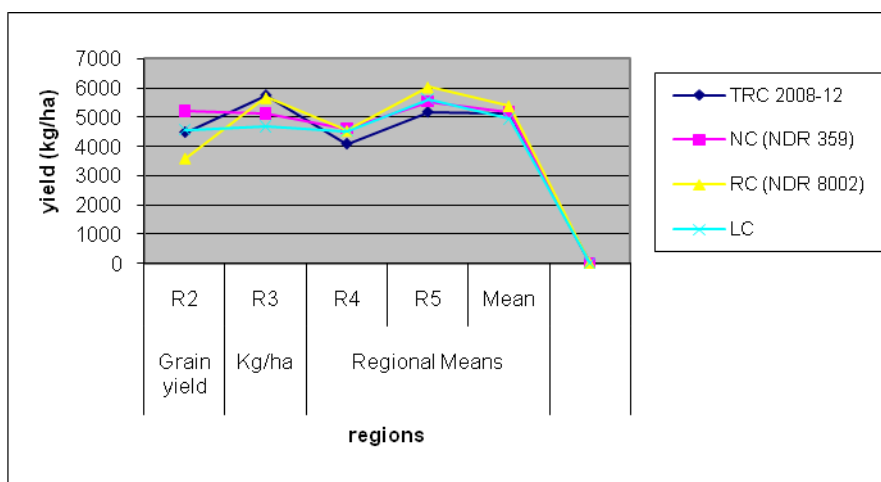


Figure 1: Yield Performance of TRC 2008-12 over regions

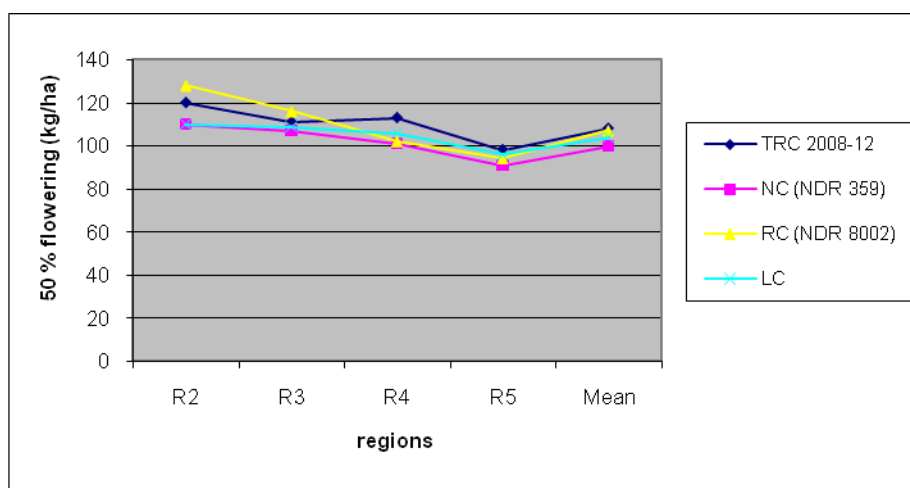


Figure 2: Performance of TRC 2008-12 over regions for days to 50 % flowering
Performance of TRC 2008-6 (IET 22580) in All India Coordinated Rice Improvement Project (AICRP)

TRC 2008-6 (IET 22580) was tested through All India Coordinated Rice Improvement Project (AICRP) under Initial Variety Trial 1-Irrigated Mid Early (IVT -IME), Kharif 2011. TRC 2008-6 (IET 22580) recorded an national yield average of 5127 kg/ha. Highest yield was recorded in R5 (5833 kg/ha). It required 95 days for 50% flowering, produced 305 panicles / sq. m. Plant height of the line was 112 cm.

The yield and yield related trait of TRC 2008-6 are presented in table as below

S. No.	Characters		TRC 2008-6 (IET 22580)	NC (IR 64)	*RC	LC
2.	Grain yield	R2	4831	3950	4563	4419
		R3	4419	4205	4622	4035

	Kg/ha	R4	4913	3813	4899	4600
	Regional	R5	5833	5510	5484	6274
	Means	Mean	5127	4653	5001	4979
3.	Days to 50% Flowering	R2	104	99	106	101
		R3	99	99	103	97
		R4	93	95	97	93
		R5	90	88	86	96
		Mean	95	92	96	96
4.	Panicles/sqm	R2	281	281	261	292
		R3	261	245	287	268
		R4	266	279	273	279
		R5	378	378	387	397
		Mean	305	300	317	319
5.	Plant Height (cm)	R2	112	100	92	98
		R3	108	92	101	99
		R4	125	97	99	105
		R5	113	90	103	99
		Mean	112	92	101	100

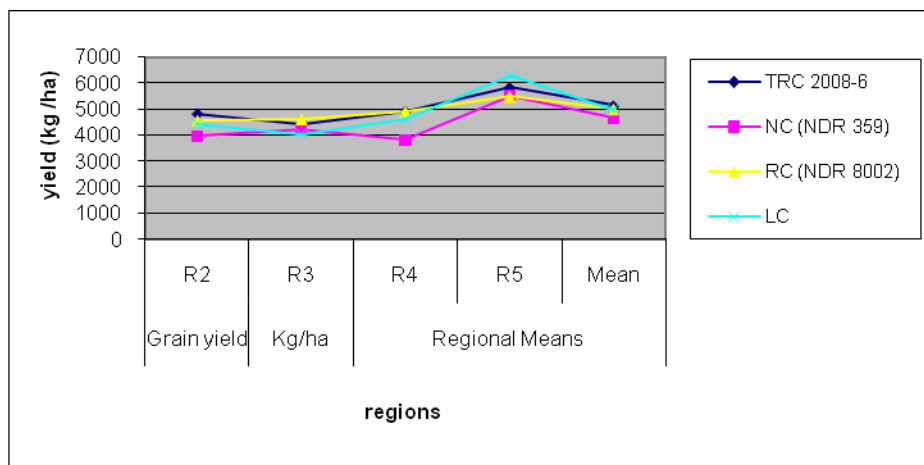


Figure 1: Yield Performance of TRC 2008-6 over regions

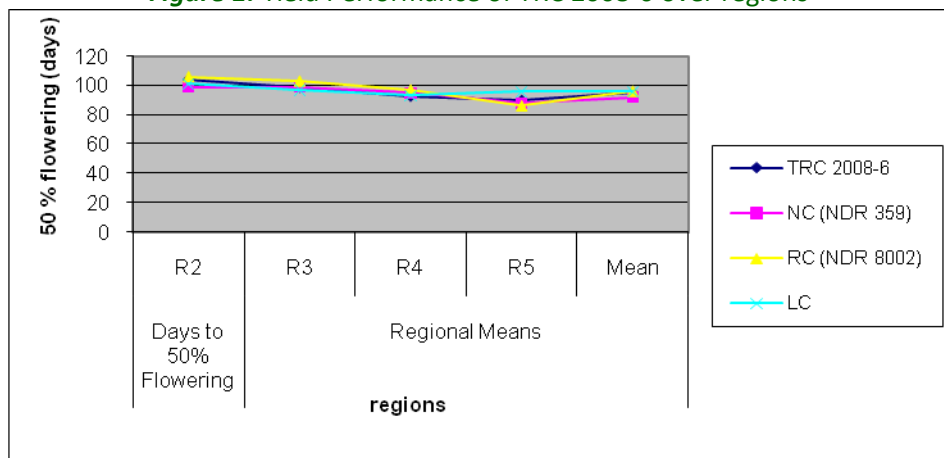


Figure 2: Performance of TRC 2008-6 over regions for days to 50 % flowering

Performance of TRC 2008-7 (IET 22581) in All India Coordinated Rice Improvement Project (AICRP)

TRC 2008-7 (IET 22581) was tested through All India Coordinated Rice Improvement Project (AICRP) under Initial Variety Trial 1-Irrigated Mid Early (IVT -IME), Kharif 2011. TRC 2008-7 (IET 22581) recorded an yield average of 4537 kg/ha at national level. Highest yield for this entry also recorded in R5 (5476 kg/ha). This entry actually did not fit in the IME group as it 50% flowering required 108 days. Plant height of the line was 99 cm and produced 309 panicles per sq.m.

The yield and yield related trait of TRC 2008-7 are presented in table as below

S. No.	Characters		TRC 2008-7 (IET 22581)	NC (IR 64)	*RC	LC
2.	Grain yield Kg/ha Regional Means	R2	2580	3950	4563	4419
		R3	4288	4205	4622	4035
		R4	4005	3813	4899	4600
		R5	5476	5510	5484	6274
		Mean	4537	4653	5001	4979
3.	Days to 50% Flowering Regional Means	R2	116	99	106	101
		R3	113	99	103	97
		R4	108	95	97	93
		R5	102	92	97	96
		Mean	108	92	96	96
4.	Panicles/sqm Regional Means	R2	266	281	261	292
		R3	256	245	287	268
		R4	274	279	273	279
		R5	399	378	387	397
		Mean	309	300	317	319
5.	Plant Height (cm) Regional Means	R2	86	100	92	98
		R3	98	92	101	99
		R4	114	97	99	105
		R5	98	90	103	99
		Mean	99	92	101	100

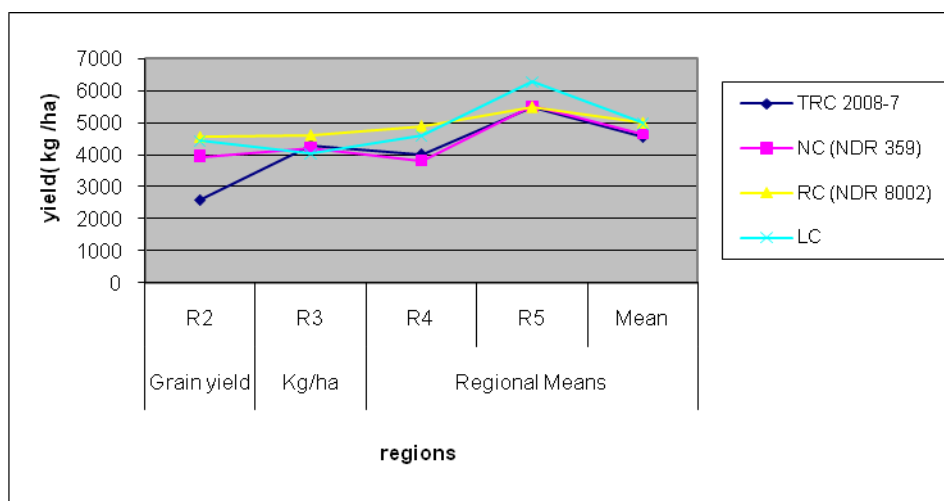


Figure 1: Yield Performance of TRC 2008-7 over regions

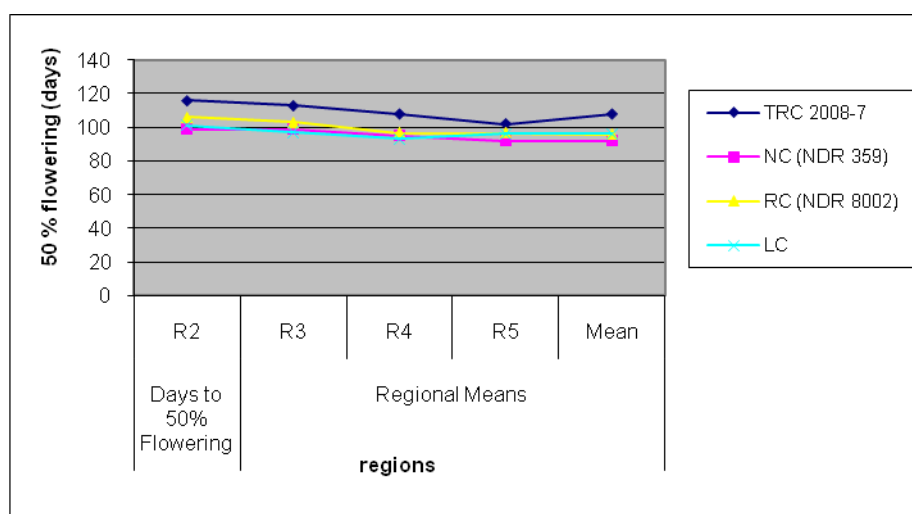


Figure 2: Performance of TRC 2008-7 over regions for days to 50 % flowering

Performance of TRC 2008-9 (IET 22582) in All India Coordinated Rice Improvement Project (AICRP)

TRC 2008-9 (IET 22582) was tested through All India Coordinated Rice Improvement Project (AICRP) under Initial Variety Trial 1-Irrigated Mid Early (IVT -IME), Kharif 2011. TRC 2008 - 9 was tested in AICRP under IVT IME. The entry recorded an national average yield of 4069 kg/ha. The entry required 112 days for 50% flowering, produced 289 panicles / sq. m. and plant height was 104 cm.

The yield and yield related trait of TRC 2008-9 are presented in table as below

S. No.	Characters	TRC 2008-9 (22582)	NC (IR 64)	*RC	LC
--------	------------	-----------------------	---------------	-----	----

2.	Grain yield Kg/ha Regional Means	R2	2967	3950	4563	4419
		R3	4386	4205	4622	4035
		R4	3819	3813	4899	4600
		R5	4148	5510	5484	6274
		Mean	4069	4653	5001	4979
3.	Days to 50% Flowering Regional Means	R2	120	99	106	101
		R3	116	99	103	97
		R4	106	95	97	93
		R5	107	92	97	96
		Mean	112	92	96	96
4.	Panicles/sqm Regional Means	R2	280	281	261	292
		R3	247	245	287	268
		R4	265	279	273	279
		R5	350	378	387	397
		Mean	289	300	317	319
5.	Plant Height (cm) Regional Means	R2	108	100	92	98
		R3	100	92	101	99
		R4	121	97	99	105
		R5	103	90	103	99
		Mean	104	92	101	100

*RC: PPRII3-North Western, Lalat- Eastern, Sasyasree-Western, MTU-1010-Southern

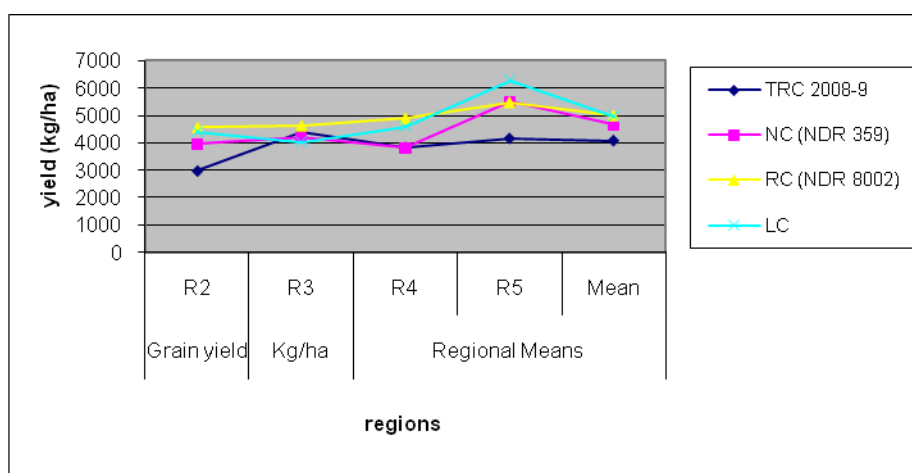


Figure 1: Yield Performance of TRC 2008-9 over regions

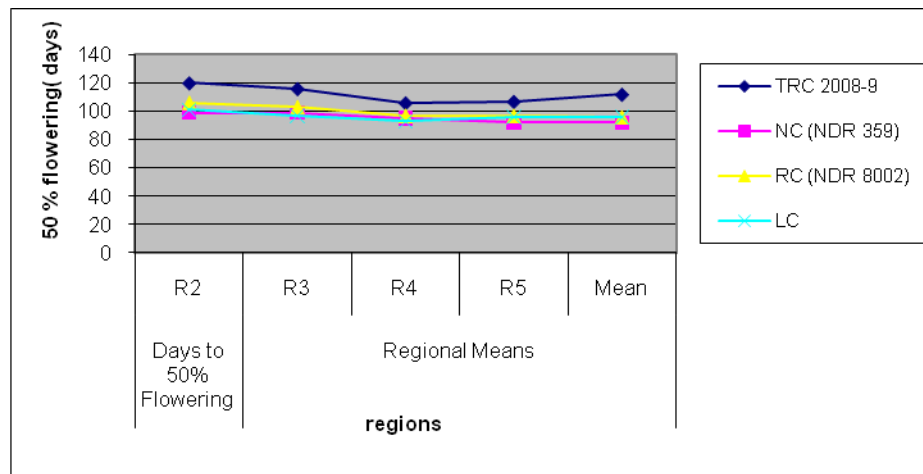


Figure 2: Performance of TRC 2008-9 over regions for days to 50 % flowering